

# S1

## Manual Clamping Shaker



➔ Small Footprint

➔ Designed for  
1-5L Cans

### SANTINT • CHINA

Add: Feilong Road, Xingyang,  
Zhengzhou, China  
Email: [info@santint.com](mailto:info@santint.com)

### SANTINT • HOLLAND

Add: Lageweg 35 - J, 2222 AG  
Katwijk The Netherlands  
Email: [sales@santint-europe.com](mailto:sales@santint-europe.com)

### SANTINT • POLAND

Add: 19 Postępu Street  
(warehouse no. 5)02-676  
Warsaw, Poland  
Email: [albert@santintpoland.com](mailto:albert@santintpoland.com)

### SANTINT • U.S.A

Add: 2000 Bloomingdale Road,  
Suite 205, Glendale Heights,  
IL 60139, U.S.A  
Email: [info@santintusa.com](mailto:info@santintusa.com)

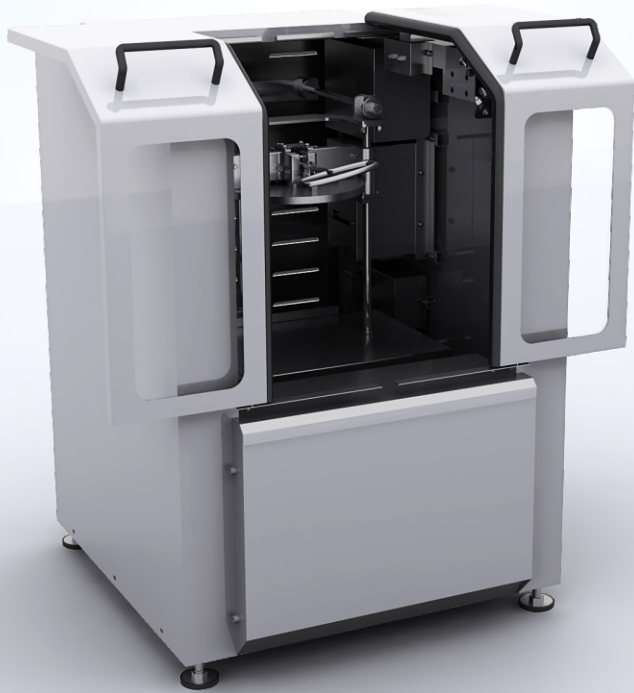
### SANTINT • BRAZIL

Add: Av.Rosa Kasinski,  
1109, G29 Capuava,Mauá,  
SP - Brasil CEP 09380-128  
Email: [marcos@santint.com](mailto:marcos@santint.com)

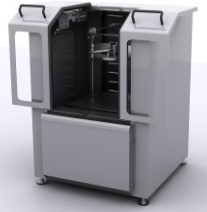
### SANTINT • INDIA

Add: H.No.692, Gala No.04,  
Print World Industrial Complex,  
Bhatale, Vehele Village, Opposite  
Balaji Compound, Bhiwandi,  
Maharashtra – 421302  
Email: [nick@santint.com](mailto:nick@santint.com)

# S1 FEATURES >>>



- 1 Bi-directional Sliding Door**  
User-friendly operation



- 2 Specialized in Efficient Shaking;**  
Expert in 1-5L cans shaking;  
Shaking speed is up to 770RPM.

- 3 Simple Structure**  
Stable Performance



- 4 Space Saving**  
0.3m<sup>2</sup> Only

- Shaking Mode Vibrational
- Shaking Time 0-300s(Optional)
- Max Shaking Weight 10kg
- Shaking Speed 770rpm

- Machine Dimension(W X D X H) 565×610×840mm
- Packing Dimension(W X D X H) 600×640×940mm
- 54Pieces/20GP

- Net Weight 105kg
- Gross Weight 125kg
- Power Supply 220V/110V 50Hz /60Hz
- Power 375W

**S1**  
Technical  
Parameters

