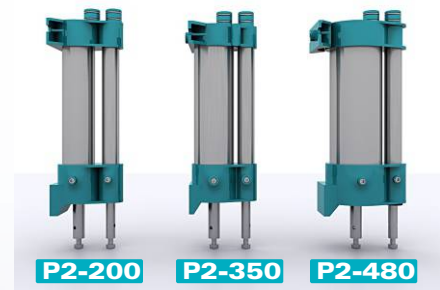


AD

Automatic Dispenser



- ➔ Minimum Shot: 1/768Y
- ➔ Net Efficiency: 200-480ml/min×5



SANTINT • CHINA

Add: Feilong Road, Xingyang,
Zhengzhou, China
Email: info@santint.com

SANTINT • HOLLAND

Add: Lageweg 35 - J, 2222 AG
Katwijk The Netherlands
Email: sales@santint-europe.com

SANTINT • POLAND

Add: 19 Postępu Street
(warehouse no. 5) 02-676
Warsaw, Poland
Email: albert@santintpoland.com

SANTINT • U.S.A

Add: 2000 Bloomingdale Road,
Suite 205, Glendale Heights,
IL 60139, U.S.A
Email: info@santintusa.com

SANTINT • BRAZIL

Add: Av. Rosa Kasinski,
1109, G29 Capuava, Mauá,
SP - Brasil CEP 09380-128
Email: marcos@santint.com

SANTINT • INDIA

Add: H.No.692, Gala No.04, Print
World Industrial Complex,
Bhatale, Vehele Village, Opposite
Balaji Compound, Bhiwandi,
Maharashtra - 421302
Email: nick@santint.com

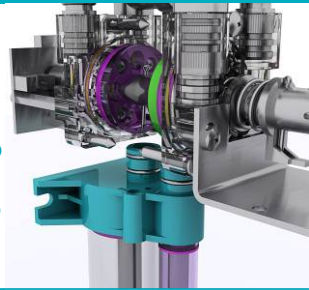
AD Series Automatic Dispenser FEATURES >>>



SANTINT
WHERE INNOVATION MEETS PRECISION

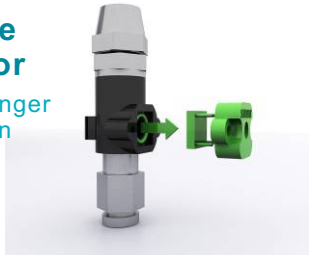
1 Double Pump Double Valve

Big pump brings high speed, and small pump ensures high accuracy. Double ceramic valves, robust and reliable.



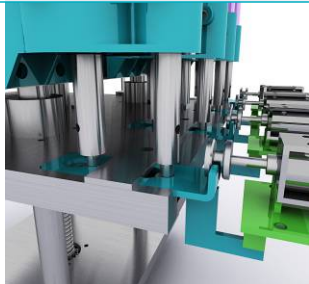
2 Adjustable tube pressure sensor

No tube explosion, longer durability; Alarm when nozzles blocked.



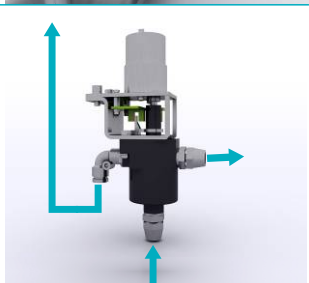
3 Pump Selection System (PSS)

Optional for larger dispensing volume, extending life-span of the machine.



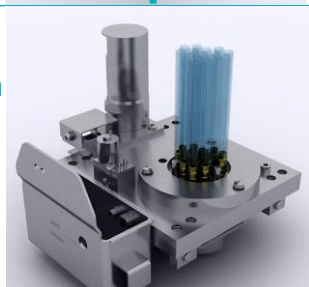
4 Recirculation

No sedimentation, drying or block in tubes, minimizing malfunction.



5 Water Circulation Humidifier

Minimizing nozzle blockage



- Dispensing Type: Simultaneous
- Minimum Shot: 1/768Y(0.039ml)
- Net Efficiency: 200-480ml/minX5
- Canisters: Up to 32
- Canister Volume: 2.5/4.5/6/12/22/50L
- Canister Material: POM/Stainless Steel

- Flow Rate (Single Pump): 1200ml/min, 875ml/min, 500ml/min
- Efficiency (Single Pump): 480ml/min, 350ml/min, 200ml/min

- Dimension (WxDxH): 1290X865X1245mm (16 canisters)
1690X865X1245mm (24 canisters)
Customization version subject to actual dimension

- Power: 180W
- Power Supply: 220V/110V,50Hz/60Hz

AD Series <<< Technical Parameters

