

AO₂₀₀

Automatic Dispenser



- ➡ Net Efficiency: 200ml/min×5
- ➡ Minimum Shot: 1/384Y

● Manual Can Table Version

SANTINT • CHINA

Add: Feilong Road, Xingyang,
Zhengzhou, China
Email: info@santint.com

SANTINT • HOLLAND

Add: Lageweg 35 - J, 2222 AG
Katwijk The Netherlands
Email: sales@santint-europe.com

SANTINT • POLAND

Add: 19 Postępu Street
(warehouse no. 5)02-676
Warsaw, Poland
Email: albert@santintpoland.com

SANTINT • U.S.A

Add: 2000 Bloomingdale Road,
Suite 205, Glendale Heights,
IL 60139, U.S.A
Email: dino@santintusa.com

SANTINT • BRAZIL

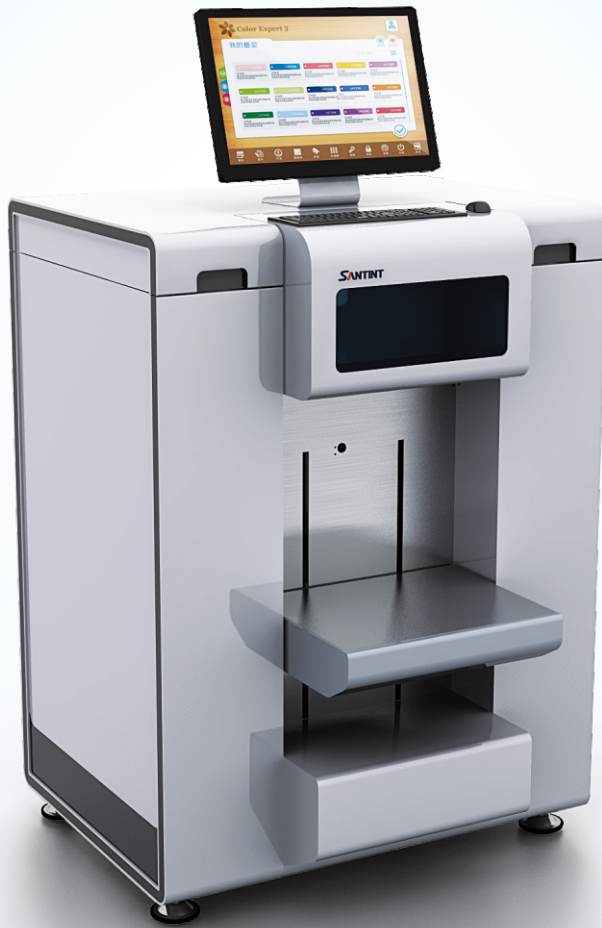
Add: Rua Rosa Kasinski,
1109 (Galpão 30) - Capuava
- Cep: 09380-128 - Mauá / Sp
Email: marcos@santint.com

SANTINT • INDIA

Add: Building No.E3, 2/3, Hari
Hari Compound, Near Gajanan
Petrol Pump, Mankoli Nana,
Bhiwandi 421302 Thane India
Email: nick@santint.com

AO₂₀₀ Automatic Dispenser FEATURES >>>

SANTINT
WHERE INNOVATION MEETS PRECISION

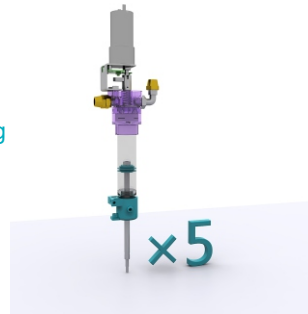


● Electrical Can Table Version

1

Piston Pump Simultaneous

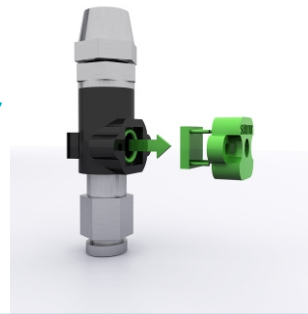
Simultaneous dispensing of 5 canisters. Calibration-free and easy maintenance.



2

Adjustable Tube Pressure Sensor

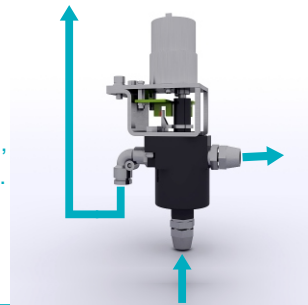
No tube explosion, longer durability; Alarm when nozzles blocked.



3

Recirculation

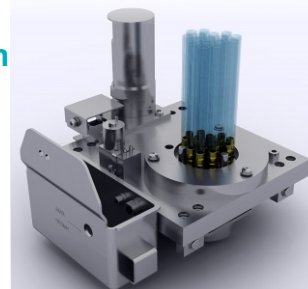
No sedimentation, drying or block in tubes, minimizing malfunction.



4

Water Circulation Humidifier

Minimizing nozzle blockage



- Dispensing Type: Simultaneous
- Minimum Shot: 1/384Y(0.077ml)
- Net Efficiency: 200ml/minX5
- Flow Rate (Single Pump): 500 ml/min
- Dimension:(WXDXH): 880X775X1185 mm (16 cans)
1260X775X1185 mm (24 cans) 1690X865X1305mm (32 cans)
- Customization version subject to actual dimension
- Power: 180W ■ Power Supply: 220V/110V,50Hz/60Hz
- No. of Canisters: Up to 32
- Canister Size: 2.5L/4.5/6L/12L/22L
- Canister Material: POM/stainless(optional)
- Efficiency (Single Pump): 200ml/min

AO₂₀₀
Technical
Parameters <<<

